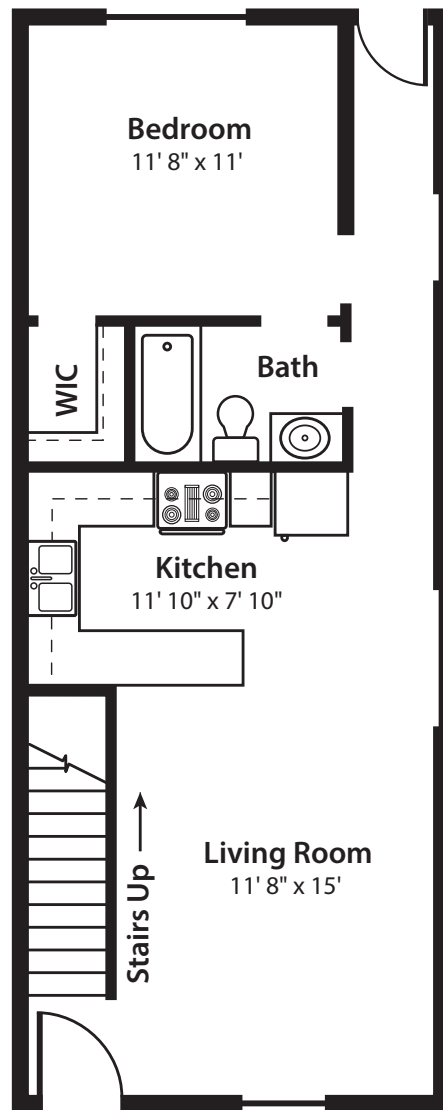


## Dockside Townhome Duplexes

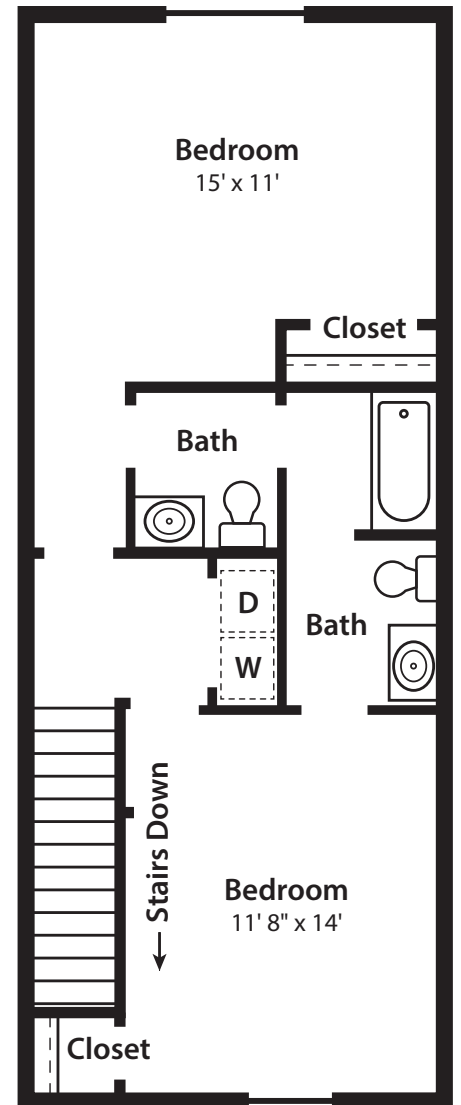
1 Bedrooms / 2.5 Baths

Dockside Duplexes offer a spacious 3 bedroom and 2.5 bathroom floor plan. Our professional staff is here to make your new home the best it can be.

- Equipped with a standard size washer and dryer
- Full kitchen with spacious counter tops and cabinets, dishwasher, full size range and stove top, refrigerator with an ice maker
- Pet friendly
- Central heating and air
- Overhead lighting in each room
- Awesome roommate floor plan
- Cable ready
- Private balcony
- 24 hour maintenance team
- Covered parking and storage
- Located next to the Greenville Greenway
- Walking distance to the City of Greenville off leash dog park



First Floor



Second Floor

Contact Eastern Property Management for current pricing and availability.

(252) 321-3281 or [easternpm.com](http://easternpm.com).